



# 1,000 BAR

## High Pressure Fuel Injector

### BENEFITS

**Fits in current engine architecture**

**Scalable for 30 to 1,000-bar fuel systems**



**Wide Application Range**



**Efficient Performance**



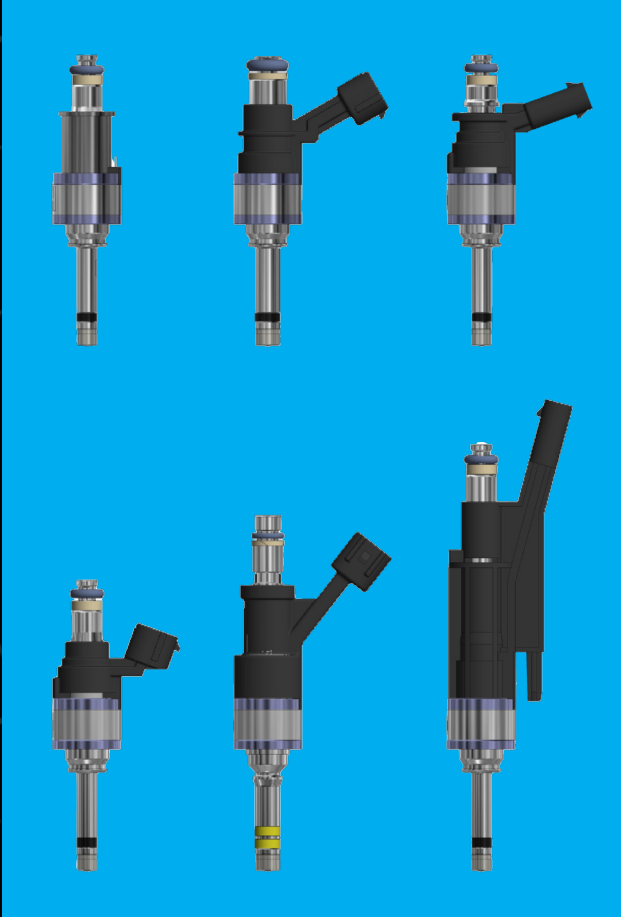
**Flexible Design**

*The injector's efficient magnetic design provides excellent feedback for unprecedented fuel control. It significantly reduces over-fueling during the injection-opening event by employing a unique armature solution. In addition, its variable valve body diameter allows for tighter packaging and the power group's modular construction enables fast and efficient changeovers between various connector designs.*

ENABLING CLEAN PROPULSION THROUGH ENGINE INNOVATION

+1.860.525.0821 | [marketing@stanadyne.com](mailto:marketing@stanadyne.com) | [www.stanadyne.com](http://www.stanadyne.com)

# TECHNICAL SPECS



## GENERAL

Pmax	up to 1000 Bar
Operating Pressure	30 to 1000 Bar
Static Flow @100 Bar	Up to 20 g/s
Static flow tolerance	+/- 4%
Dynamic flow tolerance	+/- 6% at Ti = 1.5 ms
Leakage @ 100Bar	< 1.5 mm <sup>3</sup> /min
Min. time between injections	350 µsec
Multiple Injections	4
MFM Minimum Fuel Mass @ 100 Bar w/ n-Heptane	8 to 20°
Spray angle single stream	14,000 strokes/minute full function
Spray type	Multi hole
Overall spray angle	80 to 130°
Operating Temperature	-40 to 130° C
Body Diameter	21 mm
Length	87 shown, customer driven
Tip Diameter	6 mm, customer driven

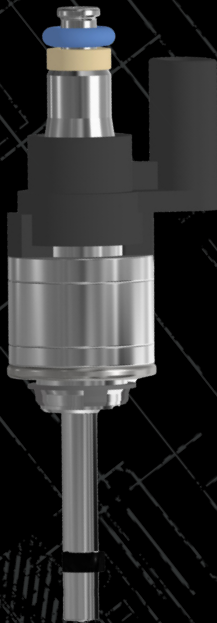
## REQUIREMENTS

## ELECTRICAL

Boost Voltage	65V
Boost time	480 µs
Hold Current	3.5A
Resistance	1.5 ohms
Supply Voltage	12-14V

## REQUIREMENTS

# UNIQUE FEATURES



## HPDI INJECTOR

- Efficient magnetic design allows for excellent ballistic control and magnetic feedback
- Armature-stop design reduces over-fueling during the injection opening event
- Valve body diameter meets tighter engine packaging requirements
- The power group's modular construction enables fast and efficient changeovers between various connector designs
- Laser-drilled multi-hole configuration

PATENT PENDING