



INJECTOR SPECIFICATION

EDITION: 1
 APPLICATIONS: SEE PAGE 2
 DATED: 05-08-95
 CUSTOMER: PERKINS SHREWSBURY

NOZZLE HOLDER
ASSEMBLY NO. 31252
 SUPERSEDES:
 CUSTOMER PART NO. SEE PAGE 2

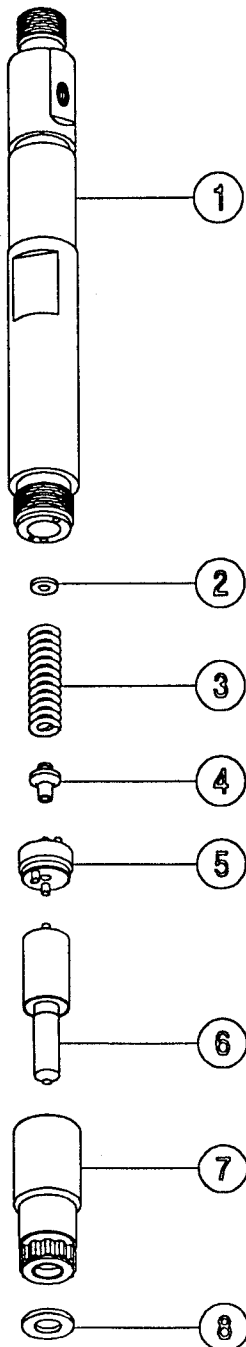
TEST STAND: ISO 8984

NOTE:

Reference Conventional Injector Service Manual 99118 for additional service information.

1. CALIBRATION FLUID...SAE J967 / ISO 4113 (Ref. S.B. 201). AT ROOM TEMPERATURE (70°-80° F)
2. CALIBRATING HIGH PRESSURE PIPES... 0.063 X 12" (1.6 X 305 mm)

ITEM NO.	PART NO.	QTY.	DESCRIPTION																																																	
1	31253	1	BODY, nozzle holder	* (1 PREFERRED 2 MAX.)																																																
2	SEE TABLE (page 2)	*	SHIM, pressure adjusting	<table border="1"> <thead> <tr> <th>PART NO.</th> <th>THICKNESS mm (inches)</th> </tr> </thead> <tbody> <tr><td>24037</td><td>1.000 (.0394)</td></tr> <tr><td>24038</td><td>1.050 (.0413)</td></tr> <tr><td>24039</td><td>1.100 (.0433)</td></tr> <tr><td>24040</td><td>1.150 (.0453)</td></tr> <tr><td>24041</td><td>1.200 (.0472)</td></tr> <tr><td>24042</td><td>1.250 (.0492)</td></tr> <tr><td>24043</td><td>1.300 (.0512)</td></tr> <tr><td>24044</td><td>1.350 (.0531)</td></tr> <tr><td>24045</td><td>1.400 (.0551)</td></tr> <tr><td>24046</td><td>1.450 (.0571)</td></tr> <tr><td>24047</td><td>1.500 (.0591)</td></tr> <tr><td>24048</td><td>1.550 (.0610)</td></tr> <tr><td>24049</td><td>1.600 (.0630)</td></tr> <tr><td>24050</td><td>1.650 (.0650)</td></tr> <tr><td>24051</td><td>1.700 (.0669)</td></tr> <tr><td>24052</td><td>1.750 (.0689)</td></tr> <tr><td>24053</td><td>1.800 (.0709)</td></tr> <tr><td>24054</td><td>1.850 (.0728)</td></tr> <tr><td>24055</td><td>1.900 (.0748)</td></tr> <tr><td>24056</td><td>1.950 (.0768)</td></tr> <tr><td>24057</td><td>2.000 (.0787)</td></tr> <tr><td>24058</td><td>2.050 (.0807)</td></tr> <tr><td>24059</td><td>2.100 (.0827)</td></tr> </tbody> </table>	PART NO.	THICKNESS mm (inches)	24037	1.000 (.0394)	24038	1.050 (.0413)	24039	1.100 (.0433)	24040	1.150 (.0453)	24041	1.200 (.0472)	24042	1.250 (.0492)	24043	1.300 (.0512)	24044	1.350 (.0531)	24045	1.400 (.0551)	24046	1.450 (.0571)	24047	1.500 (.0591)	24048	1.550 (.0610)	24049	1.600 (.0630)	24050	1.650 (.0650)	24051	1.700 (.0669)	24052	1.750 (.0689)	24053	1.800 (.0709)	24054	1.850 (.0728)	24055	1.900 (.0748)	24056	1.950 (.0768)	24057	2.000 (.0787)	24058	2.050 (.0807)	24059	2.100 (.0827)
PART NO.	THICKNESS mm (inches)																																																			
24037	1.000 (.0394)																																																			
24038	1.050 (.0413)																																																			
24039	1.100 (.0433)																																																			
24040	1.150 (.0453)																																																			
24041	1.200 (.0472)																																																			
24042	1.250 (.0492)																																																			
24043	1.300 (.0512)																																																			
24044	1.350 (.0531)																																																			
24045	1.400 (.0551)																																																			
24046	1.450 (.0571)																																																			
24047	1.500 (.0591)																																																			
24048	1.550 (.0610)																																																			
24049	1.600 (.0630)																																																			
24050	1.650 (.0650)																																																			
24051	1.700 (.0669)																																																			
24052	1.750 (.0689)																																																			
24053	1.800 (.0709)																																																			
24054	1.850 (.0728)																																																			
24055	1.900 (.0748)																																																			
24056	1.950 (.0768)																																																			
24057	2.000 (.0787)																																																			
24058	2.050 (.0807)																																																			
24059	2.100 (.0827)																																																			
3	31254	1	SPRING, pressure adjusting																																																	
4	31255	1	SEAT, spring																																																	
5	31256	1	PLATE ASSEMBLY, adapter																																																	
6	PAGE 2	1	NOZZLE ASSEMBLY, hole type (not included in nozzle holder assembly)																																																	
7	31257	1	NUT, nozzle retaining (torque to 67.8-81.4 N·m / 50-60 lbf·ft)																																																	
8	---	1	WASHER, sealing (purchased separately)																																																	
FOR ENGINEERING USE ONLY																																																				
		DATE	ECN NO.	EDITION																																																
		05-08-95	22815	1																																																



**APPLICATION AND SERVICE INFORMATION
FOR HOLDER ASSEMBLY 31252**

INJECTOR			NOZZLE			APPLICATION
STANADYNE PART NO.	CUSTOMER PART NO.	INSCRIPTION CODE	STANADYNE PART NO.	CUSTOMER PART NO.	INSCRIPTION CODE	
31251	CV 19736	PER 70158 CV 19736	31261	CV 19995	SDLLA150S6846	CV8 - CV12

	OPENING PRESSURE NEW AND SERVICE		
INJECTOR NO.	MPa (PSI)	MAX VALVE LIFT mm (inches)	NO. OF HOLES @ DIA. mm. (inches)
31251	25.00 - 26.00 (3625 - 3770)	0.425 (.0167)	6 @ 0.340 (.0133)

For bar, multiply MPa by 10

Maximum valve lift for service: +0.05mm beyond value shown in table.