

# INJECTOR SPECIFICATION

EDITION: 7

APPLICATIONS: SEE PAGE 2

DATED: 11-26-99

CUSTOMER: IVECO

## NOZZLE HOLDER ASSEMBLY NO. 774950

SUPERSEDES:

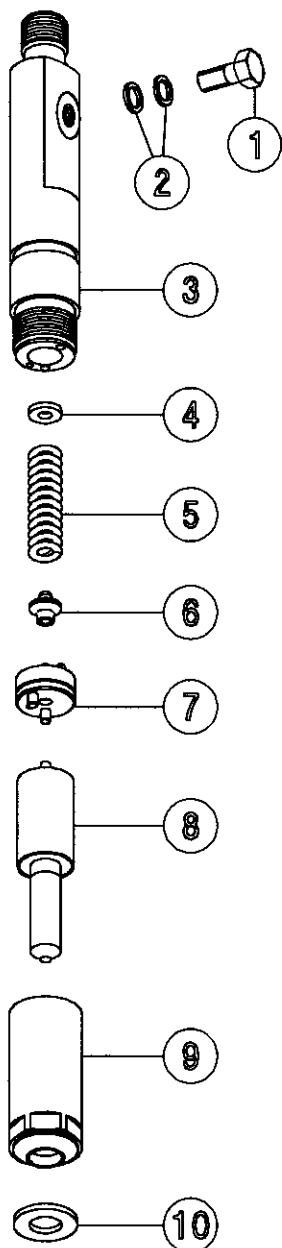
CUSTOMER PART NO. SEE PAGE 2

TEST STAND: ISO 8984

- CALIBRATION FLUID...SAE J967 / ISO 4113  
(Ref. S.B. 201). AT ROOM TEMPERATURE (70°-80° F)
- CALIBRATING HIGH PRESSURE PIPES... 0.063 X 12"  
(1.6 X 305 mm)

NOTE: Reference Conventional Injector  
Service Manual 99118 for additional  
service information.

ITEM NO.	PART NO.	QTY.	DESCRIPTION	
			PART NO.	THICKNESS mm (inches)
1	31025	1	SCREW, inlet union (torque to 8-10 N-m)	*(1 PREFERRED 2 MAX.)
2	772051	2	GASKET, banjo	
3	775144	1	BODY, nozzle holder	
4	SEE TABLE	*	SHIM, pressure adjusting	
5	781503	1	SPRING, pressure adjusting	
6	781504	1	SEAT, spring	
7	781505	1	PLATE ASSEMBLY, adapter	
8	PAGE 2	1	NOZZLE ASSEMBLY, hole type (not included in nozzle holder assembly)	
9	774971	1	NUT, nozzle retaining (torque to 67.8-81.4 N-m / 50-60 lbf-ft)	
10	---	1	WASHER, sealing (purchased separately)	
<b>FOR ENGINEERING USE ONLY</b>				
	DATE	ECN NO.	EDITION	
	08-26-93	20837	1	
	12-10-94	22358	2	
	04-04-95	23411	3	
	07-28-95	23411	4	
	10-12-95	24053	5	
	04-24-97	23600	6	
	11-26-99	26624	7	



**APPLICATION AND SERVICE INFORMATION  
FOR HOLDER ASSEMBLY 774950**

INJECTOR			NOZZLE			APPLICATION
STANADYNE PART NO.	CUSTOMER PART NO.	INSCRIPTION CODE	STANADYNE PART NO.	CUSTOMER PART NO.	INSCRIPTION CODE	
774949 *	4802391	774950 / 500 W	774951	4802393	DLL 124S 500W	8035 /45 /55 /65 with 100mm bore
774952 **	4802394	774950 / 501 W	774953	4802395	DLL 136S 501W	8035 /40/45/55/60/65 with 100mm bore
775240	4809872	774950 / 508 W	775241	4810675	DLL 121S 508W	8060.24.661 & 662
30859	500300632	774950 / 859	30863	500300633	SDLLA134S6885	8065.06.330
30860	500300634	774950 / 860	30861	500300635	SDLLA138S6884	8065.05.330 /325
31073	99431239	774950 / 073	31074	99431240	SDLLA138S1112	8005.05 SILENT
31076	99431241	774950 / 076	31077	99431243	SDLLA134S1113	8005.06 SILENT
775243	4808243	774950 / 509 W	775244	4808244	SDLL 124S509W	-
775758	-	774950 / 515 W	775759	-	SDLL 136S515W	-
32742	99474912	774950 / 742	32743	99474914	SDLLA124S1001	8035.05/45/55/65
32745	99474913	774950 / 745	32746	99474915	SDLLA136S1000	8035.06/45/55/65

INJECTOR NO.	OPENING PRESSURE NEW AND SERVICE	MAX VALVE LIFT mm (inches)	NO. OF HOLES @ DIA. mm (inches)
	MPa (PSI)		
774949	23.0 - 23.8 (3335 - 3451)	0.300 (.0118)	4 @ 0.305 (.0120)
774952	23.0 - 23.8 (3335 - 3451)	0.300 (.0118)	3 @ 0.360 (.0142)
775240	23.0 - 23.8 (3335 - 3451)	0.300 (.0118)	3 @ 0.360 (.0142)
30859	26.0 - 26.8 (3770 - 3886)	0.275 (.0108)	4 @ 0.295 (.0116)
30860	26.0 - 26.8 (3770 - 3886)	0.300 (.0118)	3 @ 0.335 (.0132)
31073	26.0 - 26.8 (3770 - 3886)	0.275 (.0118)	3 @ 0.345 (.0136)
31076	26.0 - 26.8 (3770 - 3886)	0.275 (.0108)	4 @ 0.305 (.0120)
775243	23.0 - 23.8 (3335 - 3451)	0.300 (.0118)	4 @ 0.315 (.0124)
775758	25.0 - 25.8 (3625 - 3741)	0.475 (.0187)	3 @ 0.380 (.0149)
32742	23.0 - 23.8 (3335 - 3741)	0.275 (.0108)	4 @ 0.305 (.0120)
32745	23.0 - 23.8 (3335 - 3451)	0.325 (.0127)	3 @ 0.360 (.0141)

For bar, multiply MPa by 10

Maximum valve lift for service: + 0.05mm beyond value shown in table.

\* P/N 774949 replaced by P/N 32742

\*\* P/N 774952 replaced by P/N 32745