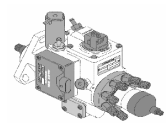
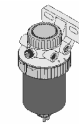
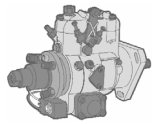


**STANADYNE®**

# SERVICE BULLETIN

DATE: November 29, 2004

**SUBJECT: NEW DS PUMP MODEL FOR MODEL YEAR 2004 GENERAL ENGINE PRODUCTS (GEP) 6.5L DIESEL ENGINE**

**PUMP MODELS AFFECTED: DS4831-5827**

The 6.5L diesel engine, manufactured by a subsidiary of AM General LLC - General Engine Products, continues to be a viable engine platform used in a variety of applications. For model year 2004, a new DS pump model has been released which incorporates several hardware changes as well as some distinct calibration differences from other DS pump models. Because of these differences, the DS4831-5827 (GEP Part Number 18000423) is unique and does not supersede nor is it interchangeable with other previously released DS pump models.

## Hardware Changes

The DS4-5827 uses a different fuel control section (Reference Figure 1) and a cam ring with a slightly different pumping ramp profile. The cam ring was changed because of different fueling requirements and the fuel control section was changed for the purposes of manufacturing standardization. In addition, the engines Electronic Control Unit (ECU) employs a different pump recognition strategy for selecting the optimal fueling table.

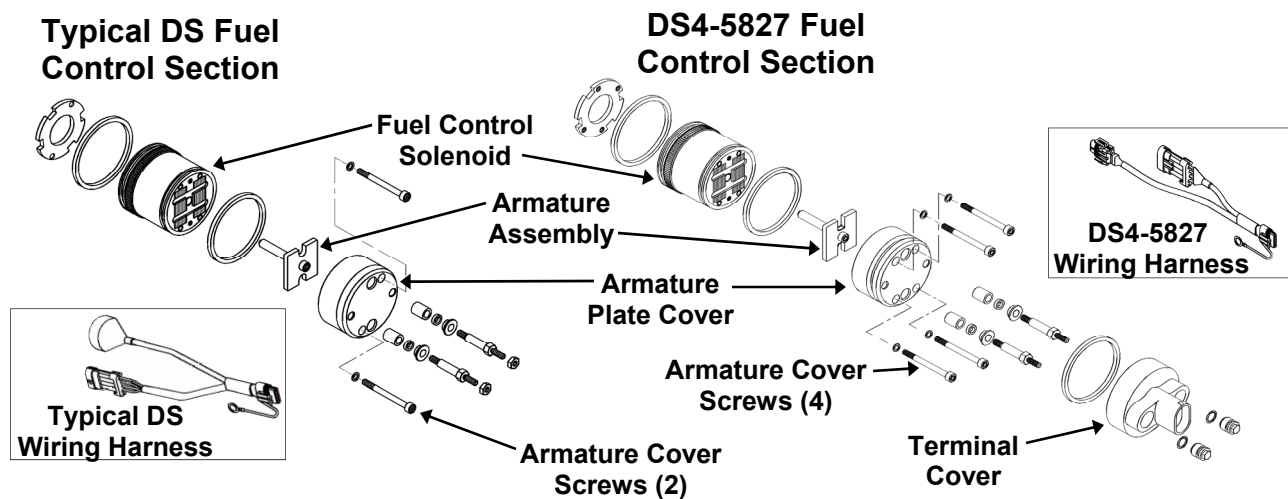


Figure 1

### Calibration Changes

For optimized engine performance, fuel table selection within the ECU is achieved by the means of a downloaded calibration code instead of the calibration resistor recognition strategy used on other 6.5L engine applications. Because of the different fuel table selection strategy, all DS4-5827 use a number “5” calibration resistor (P/N 30896). The calibration code is created by a computer program using pump performance data generated during initial pump calibration. The calibration code is stamped onto the pump name plate in a twelve digit format (Reference Figure 2). For production purposes a bar coded calibration tag is also created (Reference Figure 2) and attached to the wires on the electric shut-off solenoid. The calibration code is downloaded to an ECU during engine production by means of a bar code reader.

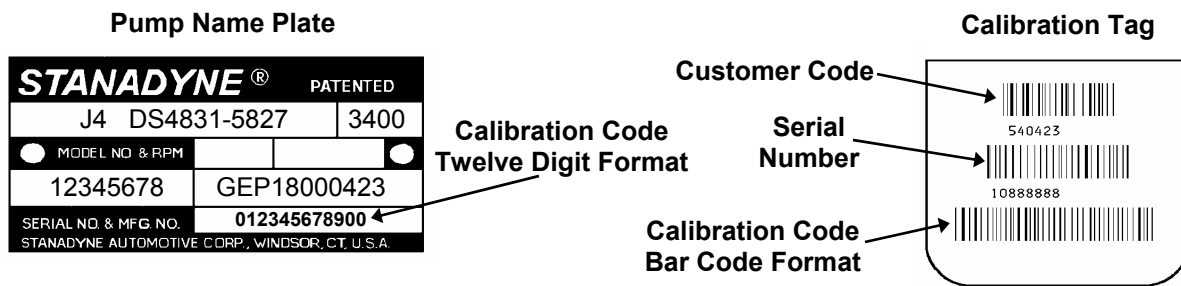


Figure 2

### Service

Until further notice, a service moratorium is in effect for pump model DS4-5827. Should you receive a DS4-5827 pump model for service within the warranty period of 3 years or 50,000 miles (Reference section 4.3.4 of the Stanadyne Policies and Procedures), the pump should be replaced and a warranty claim submitted to Stanadyne. Should one of these pump models be received for service outside of the warranty period, complete pump replacement is also required because of the necessary calibration coding. In this case the cost of unit replacement would be chargeable to the customer.

**Technical Support Group  
Product Support Department**